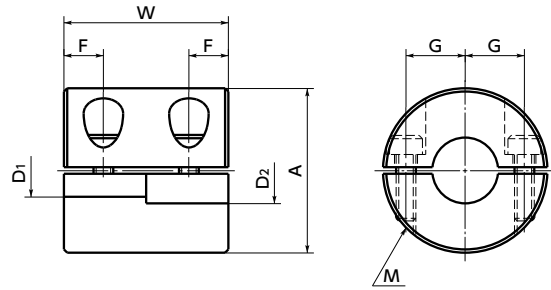


MRG-W / MRGS-W Rigid coupling - Split type

WEB Selection Tool | WEB CAD Download | Zero Backlash | High torque | High Rigidity | SUS Stainless steel

MRG-W Made of aluminum alloy
MRGS-W Made of all stainless steel



Dimensions • Performance

Unit : mm

| Part Number | A | W | F | G | M | Screw Tightening Torque (N·m) | Standard Bore Diameter D1 • D2 | | | | | | | | | | | | | | | | | |
|-----------------|----|----|-----|-----|------|-------------------------------|--------------------------------|---|---|----|----|----|----|----|----|----|----|----|----|----|---|---|---|---|
| | | | | | | | 5 | 6 | 8 | 10 | 12 | 14 | 15 | 16 | 18 | 19 | 20 | 25 | 28 | 30 | | | | |
| MRG-16W | 16 | 16 | 4 | 5 | M2.5 | 1 | • | • | | | | | | | | | | | | | | | | |
| MRG-20W | 20 | 20 | 5 | 6.5 | M2.5 | 1 | | • | • | | | | | | | | | | | | | | | |
| MRG-25W | 25 | 25 | 6 | 9 | M3 | 1.5 | | | • | • | | | | | | | | | | | | | | |
| MRG-32W | 32 | 32 | 8 | 11 | M4 | 2.5 | | | | • | • | • | | | | | | | | | | | | |
| MRG-40W | 40 | 40 | 9.5 | 14 | M5 | 4 | | | | | | • | • | • | | | | | | | | | | |
| MRG-50W | 50 | 50 | 12 | 18 | M6 | 8 | | | | | | | • | • | • | • | | | | | | | | |
| MRG-65W | 65 | 65 | 16 | 23 | M8 | 16 | | | | | | | | | | | • | • | • | • | | | | |
| MRGS-16W | 16 | 16 | 4 | 5 | M2.5 | 1 | | • | • | | | | | | | | | | | | | | | |
| MRGS-20W | 20 | 20 | 5 | 6.5 | M2.5 | 1 | | | • | • | | | | | | | | | | | | | | |
| MRGS-25W | 25 | 25 | 6 | 9 | M3 | 1.5 | | | | • | • | | | | | | | | | | | | | |
| MRGS-32W | 32 | 32 | 8 | 11 | M4 | 2.5 | | | | | • | • | • | | | | | | | | | | | |
| MRGS-40W | 40 | 40 | 9.5 | 14 | M5 | 4 | | | | | | | • | • | • | | | | | | | | | |
| MRGS-50W | 50 | 50 | 12 | 18 | M6 | 8 | | | | | | | | | | | • | • | • | • | | | | |
| MRGS-65W | 65 | 65 | 16 | 23 | M8 | 16 | | | | | | | | | | | | | | | • | • | • | • |

- All products are provided with hex socket head cap screws.
- Recommended dimensional allowances of applicable shaft diameter are h6 and h7.

Performance

| Part Number | Max. Bore Diameter (mm) | Rated torque*1 (N·m) | Max. Rotational Frequency (min ⁻¹) | Moment of Inertia*2 (kg·m ²) | Mass*2 (g) |
|-----------------|-------------------------|----------------------|--|--|------------|
| MRG-16W | 6 | 1 | 39000 | 3.2×10 ⁻⁷ | 8.8 |
| MRG-20W | 8 | 2.5 | 31000 | 8.7×10 ⁻⁷ | 15 |
| MRG-25W | 10 | 4.5 | 25000 | 2.7×10 ⁻⁶ | 29 |
| MRG-32W | 14 | 10 | 19000 | 9.3×10 ⁻⁶ | 61 |
| MRG-40W | 18 | 20 | 15000 | 2.3×10 ⁻⁵ | 99 |
| MRG-50W | 24 | 25 | 12000 | 7.1×10 ⁻⁵ | 189 |
| MRG-65W | 30 | 35 | 9000 | 2.7×10 ⁻⁴ | 428 |
| MRGS-16W | 6 | 0.3 | 39000 | 8.2×10 ⁻⁷ | 22 |
| MRGS-20W | 8 | 0.5 | 31000 | 2.4×10 ⁻⁶ | 41 |
| MRGS-25W | 10 | 1 | 25000 | 7.3×10 ⁻⁶ | 80 |
| MRGS-32W | 14 | 2 | 19000 | 2.5×10 ⁻⁵ | 160 |
| MRGS-40W | 18 | 3 | 15000 | 6.7×10 ⁻⁵ | 285 |
| MRGS-50W | 24 | 4.5 | 12000 | 2.0×10 ⁻⁴ | 541 |
| MRGS-65W | 30 | 7 | 9000 | 7.7×10 ⁻⁴ | 1220 |

- *1: Correction of rated torque due to load fluctuation is not required.
- *2: These are values with max. bore diameter.

• Part number specification

MRGS-25W-8-8



Additional Keyway at Shaft Hole → P.803 | Cleanroom Wash & Packaging → P.807 | SUS Change to Stainless Steel Screw → P.805
 Please feel free to contact us | Available / Add'l charge | Available / Add'l charge